



OBERDORFER[®]

An Ingersoll Rand Business

FLEXIBLE IMPELLER, ROTARY GEAR & CENTRIFUGAL PUMPS

Marine Pump Solutions



Keeping the Marine Industry Flowing Since 1890



Oberdorfer™ Pumps has been propelling the pumping industry forward since we manufactured our first pump in 1890. Oberdorfer is based in Syracuse, New York.

We manufacture gear pumps,
centrifugal pumps, flexible impeller
pumps, progressive cavity pumps,
and roller pumps.



Our pumps are used in the Oil & Gas, Marine, Industrial, Agricultural, Chemical Processing, and Food and Beverage industries among others.

As part of Ingersoll Rand, a global leader in industrial products, Oberdorfer operates with philosophy that places customer satisfaction, quality, innovation and ethical business practices at the forefront of everything we do.



Oberdorfer has always produced quality pumps, and has always been an innovator in manufacturing and design. We have weathered the changes our world has seen and have been at the forefront of advancing technology. As our world grows, so does Oberdorfer. The evolution of the pump continues, and Oberdorfer will continue to be a leader in pump innovation.

Need a **Reliable Marine Pump**? Discover Oberdorfer Solutions!

In the challenging realm of marine operations, Oberdorfer stands at the helm with pumps crafted for peerless performance. Our bronze rotary gear pumps, featuring corrosion-resistant bronze castings and precision-engineered bronze gears, are designed for sustained operation in the saline-rich marine environment.

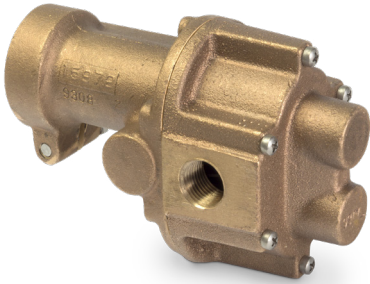
Equip your vessel with Oberdorfer's pumps to confidently face a diverse array of marine tasks, including air conditioning, bilge and seawater recirculation, oil changes, fuel transfer, and more. These pumps have become the backbone of fluid management for leading marine manufacturers and boat operators, who depend on Oberdorfer for critical functions such as fuel conditioning, ballast trimming, and oil transfer.

Renowned among premier marine manufacturers for their reliability, Oberdorfer pumps are the preferred choice for uninterrupted performance at sea, delivering the peace of mind that comes with equipment you can trust.

Why is it worth choosing Oberdorfer pumps?

- Corrosion resistance – robust bronze construction and stainless steel shafts ensure long service life even in the most challenging conditions.
- Wide range of applications – our pumps are effective in engine cooling systems, sentimental pumps, fuel transfer, deck washing, and many other applications.
- Customizable options – a wide selection of seal types, bearings, and drive systems.

BETTER *Delivery* **BETTER** *Service* **BETTER** *Quality* **BETTER** *Selection*



Oil Change

Oberdorfer Oil Change Pumps are ideal for dockside oil changes or for engine room use. Made of bronze with stainless steel shafts, they feature carbon bearings, spring loaded lip seals and are available in a choice of AC or DC motors.

MODELS

N991, N992

FLOW

UP TO

4.5 GPM

150 PSI



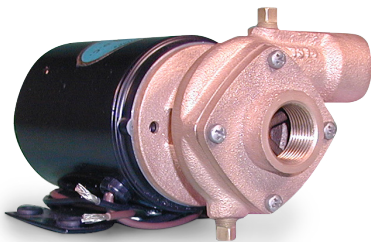
FEATURES

ROTARY GEAR PUMPS

- Rugged Corrosion-Resistant Bronze Construction and Stainless Steel Shaft
- Slotted Motor Base with Rubber Grommets
- Robust Design to Handle the Rigors of Continuous Duty Usage
- Available with Lip Seals or mechanical seals
- Available with or without Relief Valve
- Helical Gears for Low Noise
- O-Rings for Better Seal
- Available with AC and DC Motors

Air Conditioning

Non-Priming



MODELS

172B, 104M, 109MB, 101M

FLOW

UP TO

75 GPM

45 PSI



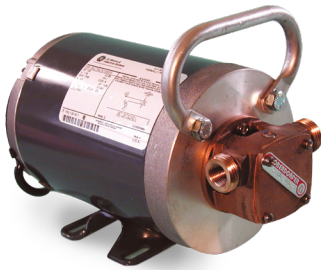
FEATURES

CENTRIFUGAL PUMPS

- Rugged Bronze Construction with Stainless Steel or Monel Shaft for Marine Use
- Teflon Barrier Seal to Protect Motor Bearings
- Carbon face Mechanical Pump Seals
- Fluoroelastomer (FKM) or Chemlon Pump Seals Available for Solvent Transfer
- Explosion-Proof Motors Available
- Ability to Handle Contaminated Liquids
- A Standard in the Marine Air Conditioning Industry

Air Conditioning

Self-Priming



MODELS

N211D

FLOW

UP TO

6.5 GPM

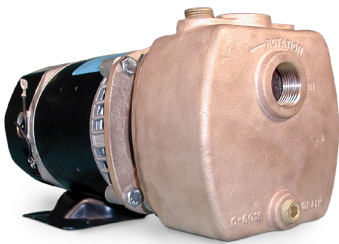
25 PSI



FEATURES

FLEXIBLE IMPELLER PUMPS

- Rugged, Corrosion-Resistant Construction with Stainless Steel Motor Shafts
- Garden Hose Threads (External) & Pipe Threads (Internal) Port Connections
- Impeller & Cam Easily Replaced
- Shaft Slinger Protects Motor Bearings
- Convenient Carrying Handle



MODELS

300B, 30PB

FLOW

UP TO

24 GPM

15 PSI

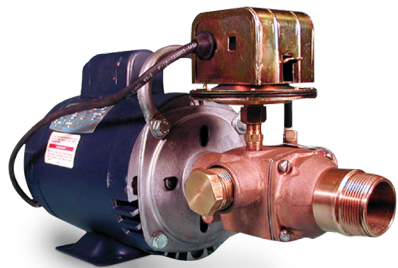


FEATURES

CENTRIFUGAL PUMPS

- Bronze Construction
- Stainless Steel Shaft (F13) Monel Shaft Sleeve (F26)
- Built for Continuous Marine Duty and Maintenance Free
- Self-Priming, Can Suction Lift to 15 ft., Can Be Deck Mounted
- Available in Pedestal Mount
- 1" NPT Ports
- 1 & 3 ph, TEFC, ODP Motors





Sewage Transfer

These pumps are a necessity in today's effort to protect the purity in boating waterways. Pumps are suitable for onboard pump-out and gray water applications. AC and DC units available (portable or stationary) with or without macerators.

MODELS

209M, 214M, 405M, 406M,
406MK, 406MG

FLOW

UP TO

25 GPM



45 PSI



FEATURES

FLEXIBLE IMPELLER PUMPS

- Rugged Bronze Construction with Stainless Steel Shafts
- Large Vent Openings Separate Pump and Motor
- Motor Shaft Slinger Protects Motor Bearings
- Rubber Motor Grommets for Noise Isolation
- Macerator Wheel and Impeller Easily Replaced
- 3 Conductor Motor Cord with Feed-Thru "On/Off" Switch
- Portable and Compact
- Optional Vacuum Switch Shut-Off





Engine Cooling

MODELS

201M, N202M, 402M, N301

FLOW

UP TO

35 GPM

35 PSI



FEATURES

FLEXIBLE IMPELLER PUMPS

- Rugged Bronze Construction
- Teflon Barrier Seals Protecting Ball Bearings
- Mechanical Carbon Ring, Ceramic Face Main Pump Seal
- Two Sealed Ball Bearings Spaced for Maximum Load Ability
- Shaft Slinger for Additional Bearing Protection



Engine Cooling, Generator Recirculating

MODELS

60P, 50P, N202M

FLOW

UP TO

24 GPM

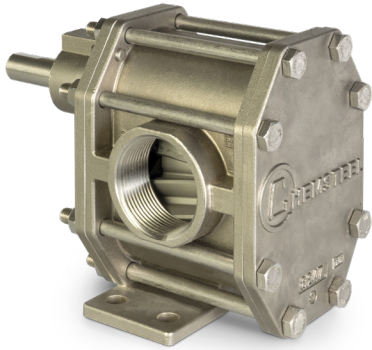
27 PSI



FEATURES

CENTRIFUGAL & FLEXIBLE IMPELLER PUMPS

- Rugged Bronze Construction
- Designed for Pulley Drive
- Heavy Duty Ball Bearings
- Mechanical Seal
- Handles Contaminated Liquids
- Quiet Operation
- No Lubrication Required
- Impeller Easily Replaced



Ice-Making Pumps

Liquid ice has the consistency of flowing water and a cooling capacity 10 times greater than chilled water. Ice produced in this form can be stored, apportioned, measured, pumped, and applied as if dealing with a liquid mass.

MODELS

S935

FLOW

UP TO

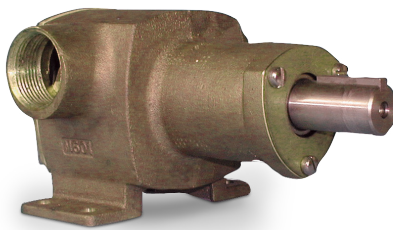
22 GPM

150 PSI



FEATURES

- Full range of seal options available including lip, mechanical, and magnetic drive seals
- Bearings available in carbon or Teflon
- Gears available in 316 stainless steel, Alloy C, Teflon, Ryton, W88, and PEEK



Bilge Pumping

MODELS

501M (flexible impeller)
N11HDM (rotary gear)

FLOW

UP TO

60 GPM

150 PSI

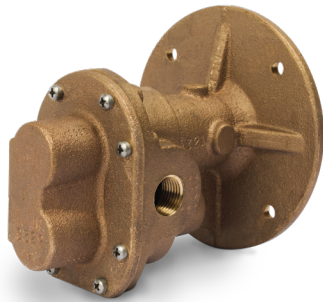


FEATURES

FLEXIBLE IMPELLER & ROTARY GEAR PUMPS

- Rugged, Corrosion-Resistant, Bronze Castings And Stainless Steel Shaft
- Neoprene or Buna impeller options (for 501M)
- Machined-in Cam for Reduced Impeller Wear (501M)
- Electric clutch options (N11HDM)

Other Applications for these pumps include: transfer pump for diesel fuel, lube oils, pressure pump for deck washdown, cleaning buoys and auxiliary steering pumps for barges.



Fuel Transfer

Getting fuel from one place to another is no problem for these high quality bronze gear pumps. Available in many different sizes, there's one just right for your application.

MODELS

N992, N992, N993, N994, N970, N990, N1100

FLOW

UP TO

60 GPM

150 PSI

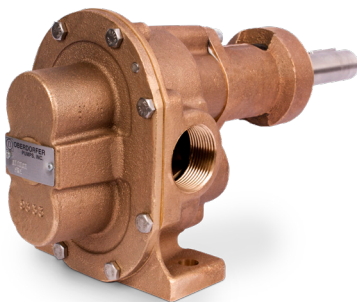


FEATURES

- Bronze Corrosion-Resistant Castings
- Special Cast Bronze Gears
- Stainless Steel Shafts and Fasteners
- Formed Ring Seal Packing (Lip & Mechanical Seals on Special Order)
- Heavy Duty Carbon Bearings (self-lubricating)
- Positive displacement flow

Fire Pump or Ballast Transfer

Responding to fire emergencies with effective pumping equipment is crucial to any boat owner. These large capacity pumps get water to the problem quickly and efficiently.



MODELS

N11HDP, N13HDP, N26HDM, N11500, N11510, N13500, N994, N970, N990

FLOW

UP TO

85 GPM

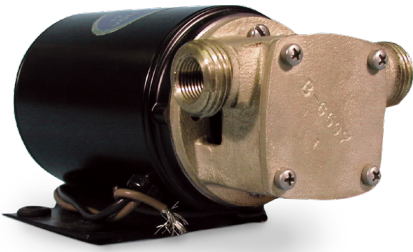
150 PSI



FEATURES

ROTARY GEAR PUMPS

- Self-Lubricating Carbon Bearings
- Rugged, Corrosion-Resistant, Bronze Construction with Stainless Steel Shafts
- Self-Priming
- Available with Relief Valve
- O-Ring for a Better Seal
- Low-Noise Helical Gears



Baitwell

Baitwell recirculation pump is mounted below deck on stern; below water line for gravity flow with pump head down and motor above, so that any failure of seal will not allow seawater to drip on motor.

MODELS

170M, 172B, 201D, N201D, N211D

FEATURES

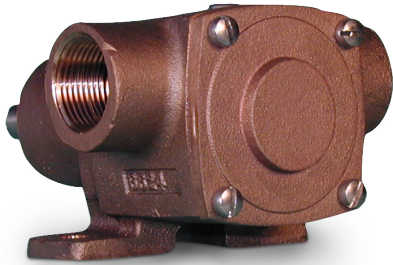
CENTRIFUGAL PUMPS

- Rubber Base Grommets Dampen Vibration and Reduce Noise
- Rugged, Corrosion Resistant, Bronze Construction with Stainless Steel Shafts
- Compact and Lightweight
- Meets US Coast Guard Ignition Protection Requirements. 33 CFR 183.410(R)

FLEXIBLE IMPELLER PUMPS

- NBR Seal
- Rugged, Corrosion Resistant, Bronze Construction with Stainless Steel Shafts
- Motor Shaft Slinger Protects Motor Bearings
- Rubber Motor Grommets Dampen Vibration and Reduce Noise
- Impeller Easily Replaced, Neoprene and Buna options available
- Vacuum Switch Shut-off Optional
- Garden Hose Threads (External) & Pipe Threads (Internal) for Port Connections





General Purpose

These pumps can be used for a variety of purposes, most common are water and mild chemical transfer. Select the size you need to do the job.

MODELS

N301M, N305M, 401M, 501M

FLOW

UP TO

60 GPM

55 PSI



FEATURES

FLEXIBLE IMPELLER PUMPS

- Rugged, Corrosion-Resistant, Bronze Construction
- Teflon Barrier Seals Protecting Ball Bearings
- Machined-in Cam for Reduced Impeller Wear
- Mechanical Carbon Ring, Ceramic Face Main Pump Seal
- Two Sealed Ball Bearings Spaced for Maximum Load Ability
- Shaft Slinger for Additional Bearing Protection
- Easily Replaceable Impeller

General Application Data

APPLICATIONS	PUMP MODELS
Oil Change	N991-32A96 / N991R-32A96, N991-32A97 / N991R-32A97, N991-C81 / N991R-C81, N992-32C81 / N992R-32C81, N992-32C82 / N992R-32C82, N991-F41 / N992R-F41, N992-37F30
Sewage Transfer	209M-A92 / 209M-A94, 214M-F35, 405M-04M26, 405M-04, 406M-04, 406M-04N26, 406MK-04, 406MK-04N26, 406MG-03UGY
Air Conditioning (Non-Priming)	172B-26M 172B-27, 104M-F13, 104M-F26, 109MB-J19, 109-1-J26, 101M
Air Conditioning (Self-Priming)	N211D-04D28, 300B-F13 / 300B1-F26
Engine Cooling	201M, N202M-3, N202M-7, N202M-11, N202M-17, 402M-03, 403M, 404M
Engine Cooling Generator Recirculating	60P, 50P-15 / 50P-35, N202M-11
Ice Making	STAINLESS STEEL S93516CB
General Purpose	N301M, N305M, 401M, 501M
Bilge Pumping	501M
Baitwell	170M-A81 / 170M-A82, N201D-A88-12VOLT, N201D-A89-24VOLT, N201D-A90-32VOLT, N211D-04D28
Fuel Transfer	N992Q-J09, N991, N992, N993, N994, N970, N990, N991-C81, N1100
Fire Pump or Ballast Transfer	N9000, N11HDM / N13DM, N26HDM N11500 / N13500 (upper drive), N11510 / N13500 (lower drive), N994-38, N970-38, N990-38, N11HDM-02, N13HDM-04

The **leader** in every market we serve
by continuously improving all business processes
with a focus on **innovation and velocity**



OBERDORFER[®]

An Ingersoll Rand Business

Ingersoll Rand

12500 South Pulaski Road
Alsip, Illinois 60803
United States
Phone: (708) 389-2500
www.oberdorferpumps.com

©2025
OB-APP-MARINE 1st Ed. 4/19



Please recycle after use.