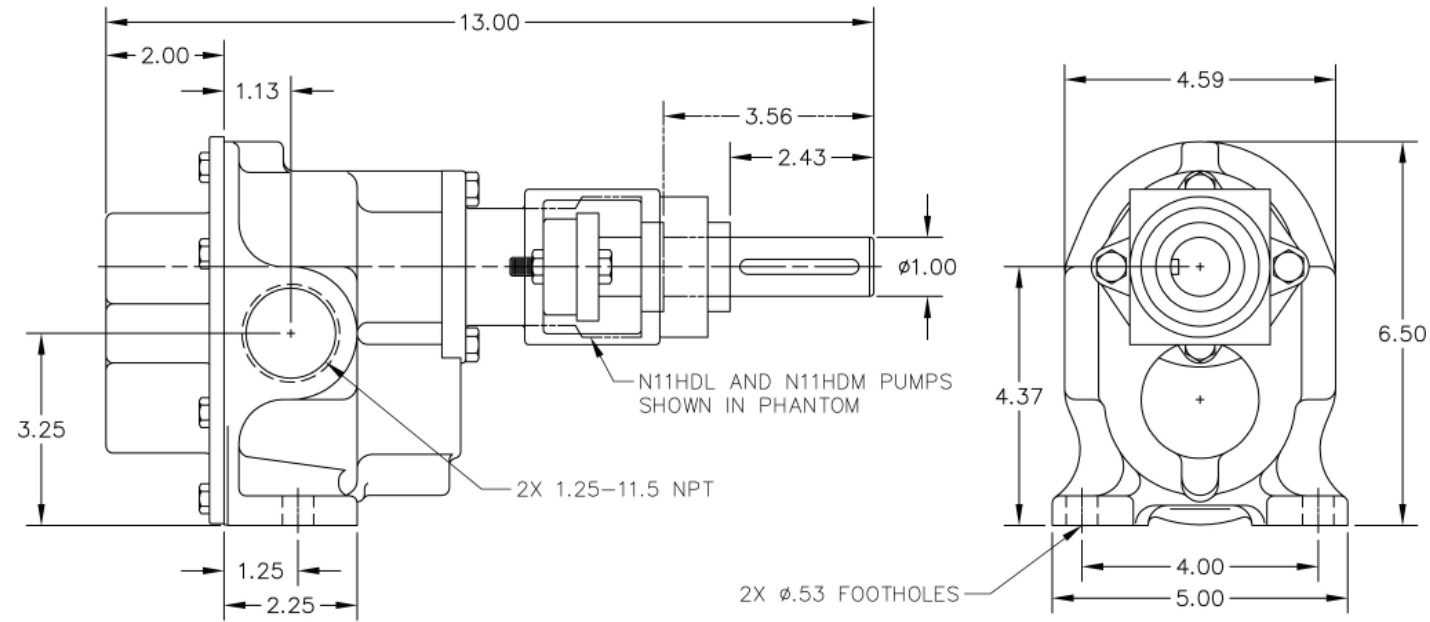


Bronze Pedestal Rotary Gear Pumps

N11HD Series

Dimensions



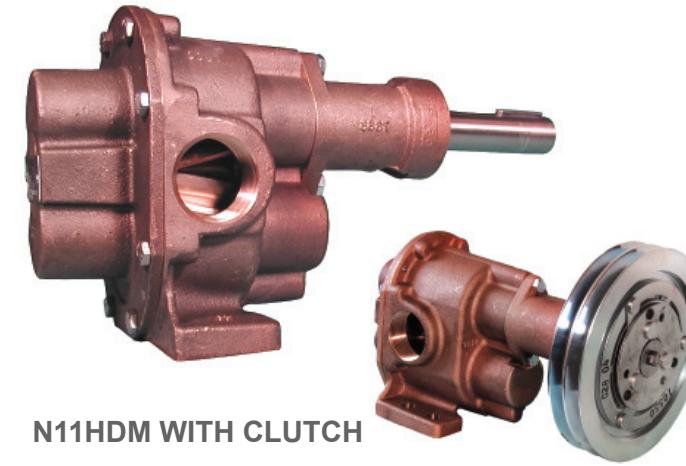

OBERDORFER PUMPS

by Gardner Denver

Bronze Pedestal Rotary Gear Pumps

N11HD Series

1 1/4" NPT Ports



N11HDM WITH CLUTCH

Seal Options:

Model	Seal		Conversion Kit
	Type	Material	
N11HDP	Packing	Acrylic-Graphite	11021
N11HDL	Lip	FKM-PTFE	11023
N11HDM	Mechanical	NBR-Ceramic	11025
N11HDP-1	Packing	PTFE	11022
N11HDLS3	Lip	NBR	11024
N11HDMS7	Mechanical	FKM-Ceramic	11026
N11HDMS8	Mechanical	EPDM	TBD

FEATURES:

- All Bronze Castings and Stainless Steel Shafts
- Sealing Arrangement Interchangeable in Field with Proper Kit
- Outboard Ball Bearing Support
- Self Lubricating Carbon Bearings
- Electric Clutch (Options)

SERVICE WEAR FACTORS:

Speed - High speed accelerates wear. For longer service life keep speed as low as possible. Pump speeds above 900 RPM not recommended except for intermittent duty and pressures below 100 psi.

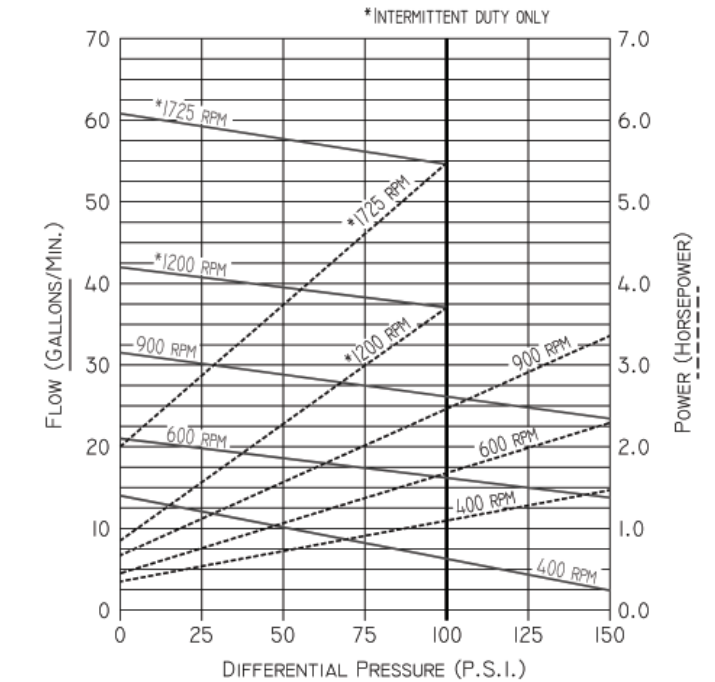
Pressure - High pressure accelerates wear. For longer service life keep pressure as low as possible.

Liquid Temperature - High temperature accelerates wear. Keep as close to room temperature as possible.

Liquid Contamination - Impurities like fine abrasive silt or sand accelerate wear. Keep liquid as clean as possible.

Liquid Lubricity - Lubricants increase service life many fold. Use lubricant additives whenever possible.

PERFORMANCE: CAPACITY WATER AT 60°F



Noise - Large gear pumps are inherently noisy due to metal to metal gear contact. Make installations far removed from offices or other relatively quiet people areas. Some noise reduction can be realized by lowering pump speed and use of isolation mounts and lines, usually the small amount of noise reduction achieved does not justify the effort and expense.

Drive & Alignment - Direct drive is the recommended drive arrangement. This pump is suitable for belt drive applications without needing pillow block bearings to achieve acceptable pump life. Correct alignment is absolutely essential for satisfactory pump life. Recheck alignment after piping has been connected to the pump. Electric clutch versions available.

SEAL CONVERSION KITS

Seal conversion kits illustrated (on back) are designed for quick removal and replacement. In each case, seal housings are fastened to pump bodies by means of 2 bolts, item 13.

IMPORTANT: Before attempting to remove a seal housing containing seal components by sliding them off the pump shaft, be sure to unlock 2 set screws locking the ball bearing inner race to the pump shaft. The ball bearing is identified as item 20. Also, before attempting to slide the seal housing from the pump shaft, remove all burrs, scale, and projections that could be formed by fretting corrosion.

NBR = Acrylonitrile-Butadiene PTFE = Polytetrafluorethylene FKM = Fluoroelastomer



OBERDORFER PUMPS

by Gardner Denver

5900 Firestone Drive, Syracuse, NY 13206
Phone: (800) 448-1668; (315) 437-0361 • Fax: (315) 463-9561

Visit www.oberdorfer-pumps.com to find in-depth descriptions of the world's leading high-quality, dependable pumps.

Due to ongoing product improvements, data shown here is subject to change without notice. Contact Oberdorfer Pumps for latest specifications.

Bronze Pedestal Rotary Gear Pumps

N11HD Series

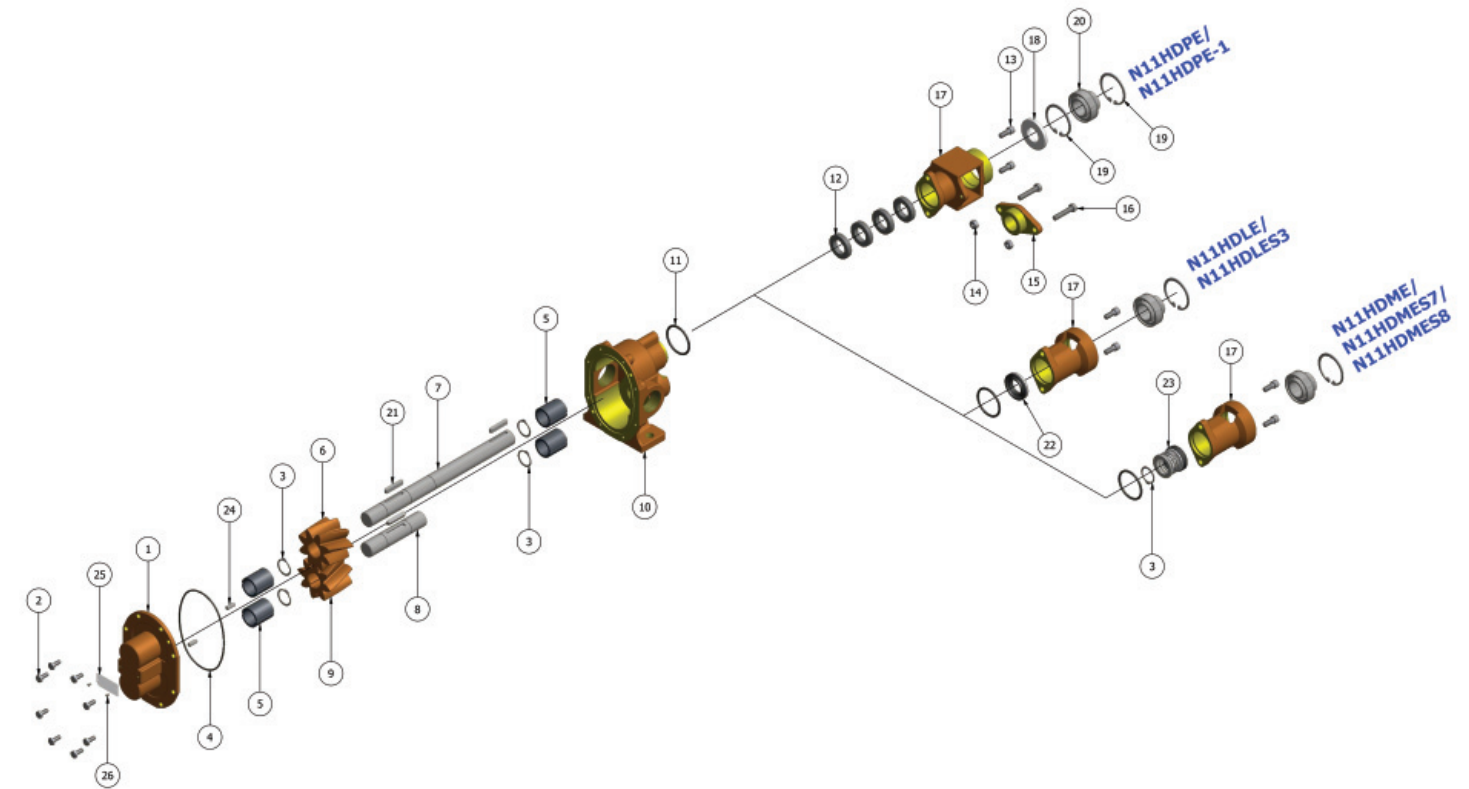
Parts List

	1	2	3	4	5	6	7	8	9	10	11	12	13
	Cover	Screw	Snap Ring	O-Ring	Bearing	Drive Gear	Drive Shaft	Idle Shaft	Idle Gear	Body	O-Ring	Packing Ring	Screw
Model	Qty. 1	Qty. 8	Qty. 4/5	Qty. 1	Qty. 4	Qty. 1	Qty. 1	Qty. 1	Qty. 1	Qty. 1	Qty. 1	Qty. 4	Qty. 2
N11HDP	9333NN5N	5393	7651 (4)	9797-158	5108	9833	7366	7652	9834	9331NG7N	6515	7624	6827
N11HDP-1	9333NN5N	5393	7651 (4)	9797-158	5108	9833	7366	7652	9834	9331NG7N	6515	7450	6827
N11HDL	9333NN5N	5393	7651 (4)	9797-158	5108	9833	7366	7652	9834	9331NG7N	9797-224	N/A	6827
N11HDLS3	9333NN5N	5393	7651 (4)	9797-158	5108	9833	7366	7652	9834	9331NG7N	6515	N/A	6827
N11HDM	9333NN5N	5393	7651 (5)	9797-158	5108	9833	7366	7652	9855	9331NG7N	6515	N/A	6827
N11HDMS7	9333NN5N	5393	7651 (5)	9797-158	5108	9833	7366	7652	9834	9331NG7N	9797-224	N/A	6827
N11HDMS8	9333NN5N	5393	7651 (5)	9999-158	5108	9833	7366	7652	9834	9331NG7N	6515	N/A	6827

	14	15	16	17	18	19	20	21	22	23	24	25	26	Repair Kit
	Nut	Gland	Screw	Seal Housing	Lip Seal	Snap Ring	Ball Bearing	Key	Lip Seal	Seal Assy	Dowel Pin	Tag	Tag Screw	
Model	Qty. 2	Qty. 1	Qty. 2	Qty. 1	Qty. 1	Qty. 1/2	Qty. 1	Qty. 3	Qty. 1	Qty. 1	Qty. 2	Qty. 1	Qty. 2	
N11HDP	8395	7451	9905	7449	6710	7372 (2)	7368	6518	N/A	N/A	8597	9344	9345	11003
N11HDP-1	8395	7451	9905	7449	6710	7372 (2)	7368	6518	N/A	N/A	8597	9344	9345	TBD
N11HDL	N/A	N/A	N/A	7365	N/A	7372 (1)	7368	6518	7262	N/A	8597	9344	9345	11005
N11HDLS3	N/A	N/A	N/A	7365	N/A	7372 (1)	7368	6518	6500	N/A	8597	9344	9345	11006
N11HDM	N/A	N/A	N/A	7365	N/A	7372 (1)	7368	6518	N/A	32315	8597	9344	9345	11007
N11HDMS7	N/A	N/A	N/A	7365	N/A	7372 (1)	7368	6518	N/A	32372	8597	9344	9345	11008
N11HDMS8	N/A	N/A	N/A	7365	N/A	7372 (1)	7368	6518	N/A	33335	8597	9344	9345	TBD

Repair kit contain items 3, 4, 5, 6, 7, 8, 9, 11, 12, 18, 22 & 23

Exploded View



Clutch Drive Options

Model	Clutch Drive Options	Clutch Body	Clutch Coil	Clutch Assembly	Pump Repair Kit	7	17
						Drive Shaft	Seal Housing
N11HDM-E12	Gear Pump, Mechanical Seal with 12V Clutch	7227	7224	32238	12013	7722-1	9169-1
N11HDM-E24	Gear Pump, Mechanical Seal with 24V Clutch	7227	9902	33066		7722-1	9169-1
N11HDM-E32	Gear Pump, Mechanical Seal with 32V Clutch	7227	7225	32239		7722-1	9169-1