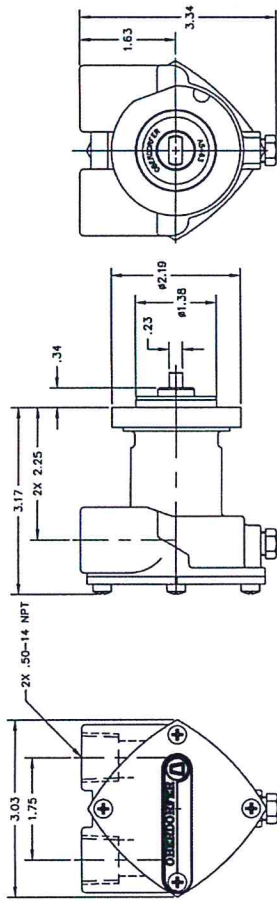


Bronze Rubber Impeller Pump
N202M-908 • N202M-837

Dimensions

N202M-908



Pump No.	Model	HP	Cylinders	Block
	M-12	10	2	Z-400
	M-18	14	2	Z-600
	M-20			
	M-25			
	M-25XP	23	3	D-950
	M-30	24	3	D-1101
	M-35			
	M-40			
	M-50	44	2	V-1902
	5411			
	5416			
	5424			
	5432			
	5444			
N202M-908				

NBR = Acrylonitrile-Butadiene PTFE = Polytetrafluoroethylene FRM = Fluoroelastomer



OBERDORFER PUMPS
by Gardner Denver

5900 Firestone Drive, Syracuse, NY 13206
Phone: (800) 448-1688; (315) 437-0361 • Fax: (315) 463-9561

Visit www.oberdorferpumps.com to find in-depth descriptions of the world's leading high-quality, dependable pumps.

Due to ongoing product improvements, data shown here is subject to change without notice. Contact Oberdorfer Pumps for latest specifications.

N202M-908-082015



OBERDORFER PUMPS
by Gardner Denver

Bronze Rubber Impeller Pump
N202M-908 • N202M-837

N202M-908



FEATURES:

- Impeller easily replaced without removing pump from engine
- Rugged simplicity
- Corrosion Resistant
- Convenient drain plug
- Clamped flange mounting allows mounting in positions 360°

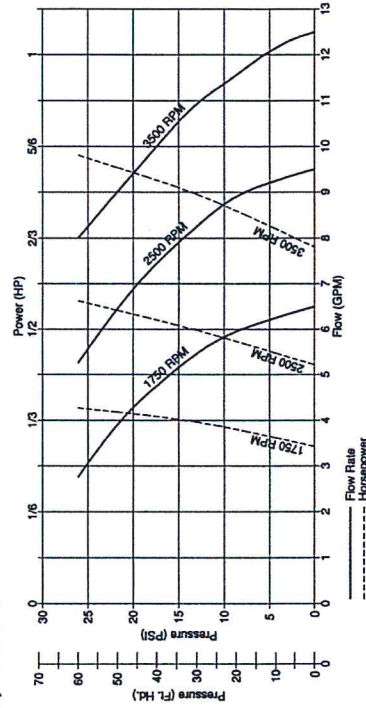
N202M-837



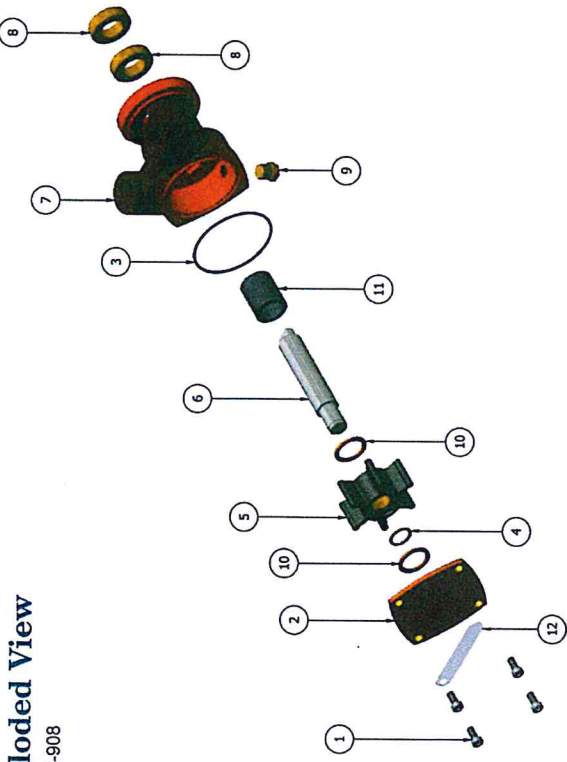
- Male tang drive
- Two separate seals: main pump and flange mounting
- "Up" direction in & out ports
- High chrome nickel stainless steel shaft
- Machined in cam
- Replaces G908, 302887, 42175, 302648

PERFORMANCE:

Capacity - Water 60° F



Bronze Rubber Impeller Pump
N202M-908 • N202M-837



Exploded View
N202M-908

Parts List

	1	2	3*	4*	5*	6	7
Model	N202M-908	N202M-837	N202M-908	N202M-837	N202M-908	N202M-837	N202M-908
Screw	Qty. 4	Qty. 1	Qty. 1	Qty. 1	Qty. 1	Qty. 1	Qty. 1
Cover	Qty. 1	Qty. 1	Qty. 1	Qty. 1	Qty. 1	Qty. 1	Qty. 1
O-Ring	Qty. 1	Qty. 1	Qty. 1	Qty. 1	Qty. 1	Qty. 1	Qty. 1
Snap Ring	Qty. 1	Qty. 1	Qty. 1	Qty. 1	Qty. 1	Qty. 1	Qty. 1
Impeller	Qty. 1	Qty. 1	Qty. 1	Qty. 1	Qty. 1	Qty. 1	Qty. 1
Shaft	Qty. 1	Qty. 1	Qty. 1	Qty. 1	Qty. 1	Qty. 1	Qty. 1
Body	Qty. 1	Qty. 1	Qty. 1	Qty. 1	Qty. 1	Qty. 1	Qty. 1
Model	N202M-908	N202M-837	N202M-908	N202M-837	N202M-908	N202M-837	N202M-908
Lip Seal	Qty. 2	Qty. 2	Qty. 2	Qty. 2	Qty. 2	Qty. 2	Qty. 2
Plug	Qty. 1	Qty. 1	Qty. 1	Qty. 1	Qty. 1	Qty. 1	Qty. 1
Washer	Qty. 2	Qty. 2	Qty. 2	Qty. 2	Qty. 2	Qty. 2	Qty. 2
Bearing	Qty. 1	Qty. 1	Qty. 1	Qty. 1	Qty. 1	Qty. 1	Qty. 1
Tag	Qty. 1	Qty. 1	Qty. 1	Qty. 1	Qty. 1	Qty. 1	Qty. 1
Repair Kit	11691	11691	11691	11691	11691	11691	11691

* Repair Kit contains items 3, 4, 5, 8 & 11

ROTATION:

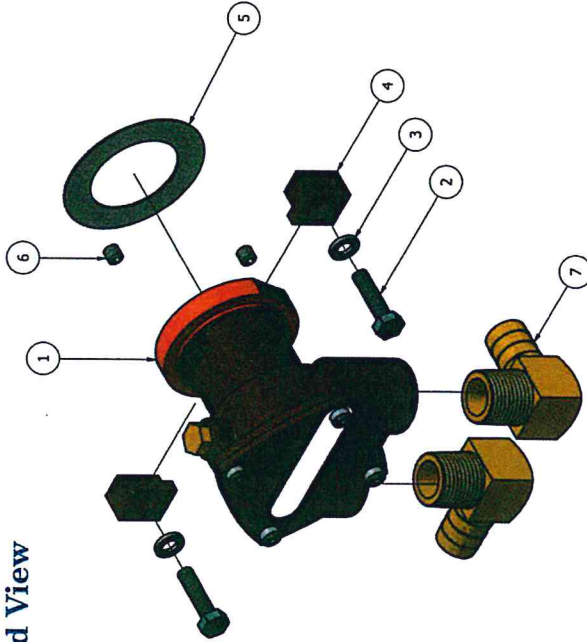
Direction of shaft rotation determines inlet and outlet ports (see line dimension drawing). Prior to installation, rotate the pump manually in direction of rotation to set flexible blades in direction desired.

DO NOT RUN DRY:

Rubber impellers generate high rubbing friction unless lubricated by liquid pumped. Lack of liquid will cause impeller to burn up.

Exploded View

N202M-837



Parts List

	1	2*	3*	4*	5*	6*	7*
Model	N202M-837	N202M-908	N202M-837	N202M-908	N202M-837	N202M-908	N202M-837
Rubber Impeller Pump	Qty. 1	Qty. 2	Qty. 2	Qty. 2	Qty. 2	Qty. 2	Qty. 2
Cap Screw	Qty. 2	Qty. 2	Qty. 2	Qty. 2	Qty. 2	Qty. 2	Qty. 2
Lock Washer	Qty. 2	Qty. 2	Qty. 2	Qty. 2	Qty. 2	Qty. 2	Qty. 2
1/2" Clamp	Qty. 2	Qty. 2	Qty. 2	Qty. 2	Qty. 2	Qty. 2	Qty. 2
Mounting Gasket	Qty. 2	Qty. 2	Qty. 2	Qty. 2	Qty. 2	Qty. 2	Qty. 2
Set Screw	Qty. 2	Qty. 2	Qty. 2	Qty. 2	Qty. 2	Qty. 2	Qty. 2
Elbow Fitting	Qty. 2	Qty. 2	Qty. 2	Qty. 2	Qty. 2	Qty. 2	Qty. 2
Qty.	3694	3695	3696	3693	3692	3690	3694

* Items 2 through 7 are included in the P/N 12456 Mounting Kit

LIQUIDS AND TEMPERATURE:

Liquids compatible with neoprene can be pumped including fresh and saltwater solutions and mild chemicals. Do not pump gasoline, severe solvents or acids. When possible flush pump with fresh water after each usage.

to freeze. Drain pump by removing drain plug provided. Located at bottom of pump body. Use methyl alcohol based anti-freeze compounds such as Zerex, Shell Some, Pyro Permanent, Permagard, Dowgard.

SUCTION LIFT:

On initial start-up pump must be primed to prevent dry-running of the impeller. Suction lift of 15 ft. is possible when impeller is wet and pump fully primed. Suction lines must be air tight in order for pump to self prime.